

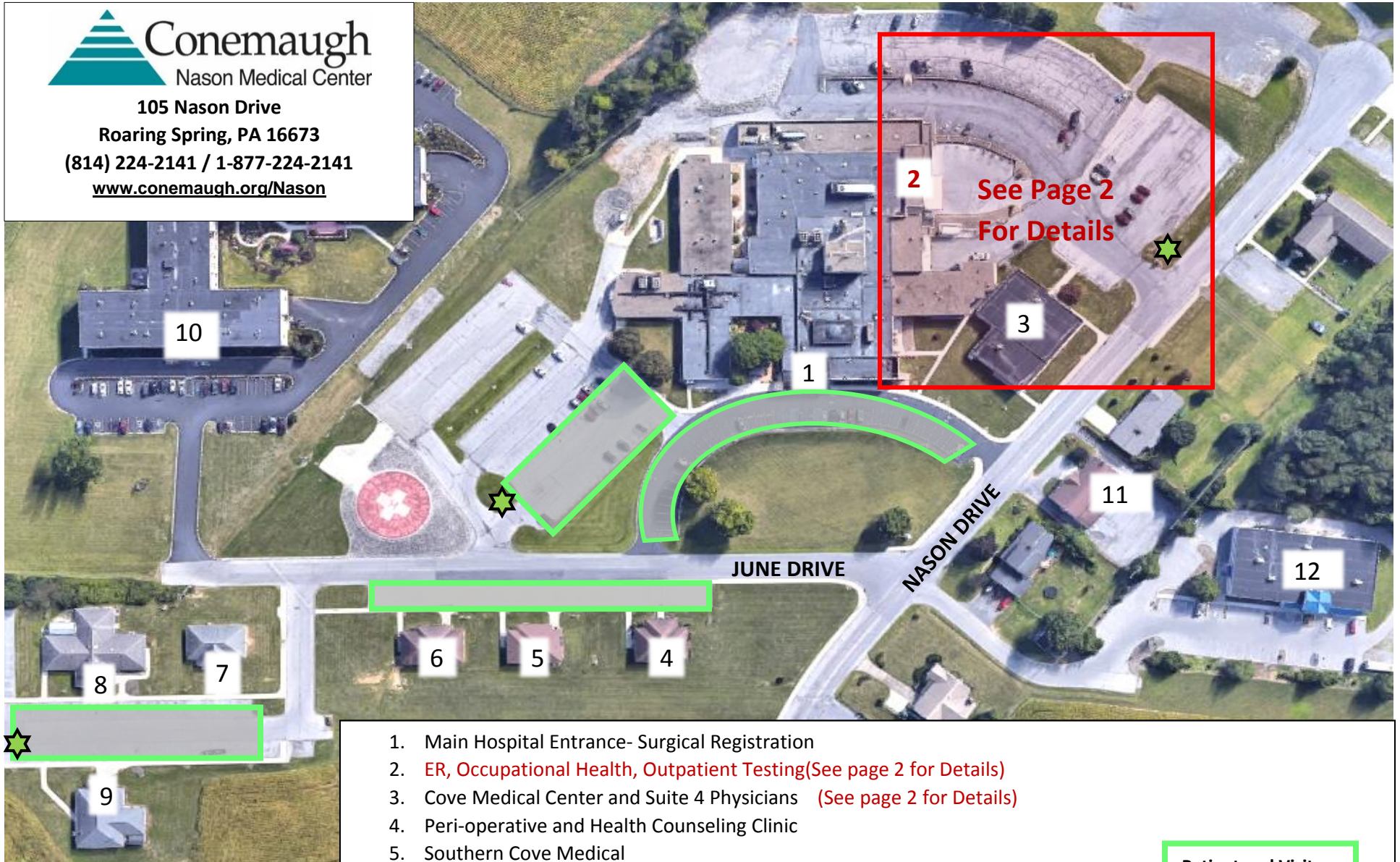


105 Nason Drive

Roaring Spring, PA 16673

(814) 224-2141 / 1-877-224-2141

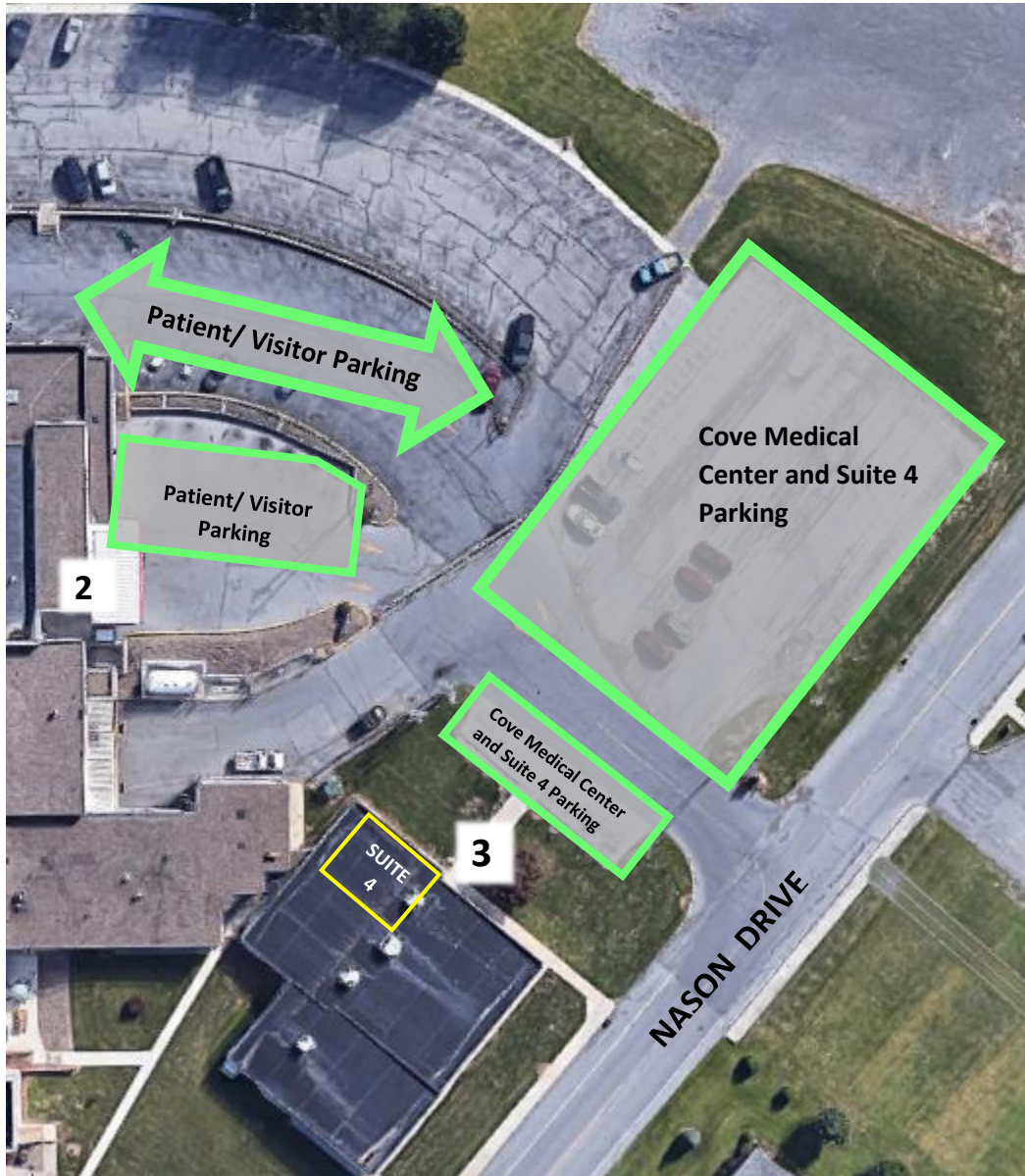
www.conemaugh.org/Nason



1. Main Hospital Entrance- Surgical Registration
2. ER, Occupational Health, Outpatient Testing(See page 2 for Details)
3. Cove Medical Center and Suite 4 Physicians (See page 2 for Details)
4. Peri-operative and Health Counseling Clinic
5. Southern Cove Medical
6. University Orthopedics
7. UPMC Specialty Care
8. Nason Wound Care/ Nason CPG Surgery
9. Pediatric Healthcare Associates
10. Graystone Court Apt. Complex
11. Professional Office Bldg 1
12. Rite Aide

Patient and Visitor
Parking areas

★ Hitching Post



2. Entrance for:

- Emergency Room
- Occupational Health
- Outpatient Testing
 - ECHOs, EKGs, Labwork, Radiology, Respiratory

3. Entrance for:

- **Cove Medical Center** - Offices are marked
 - Cove Family Practice
 - James Frommer, DO
 - Darron Locke, MD
 - Fred Heaton, DO- Family Practice
- **Suite 4 Physicians**- Proceed thru entrance, make a right- Suite 4 is immediately on right
 - CPG Vascular Surgery
 - John Gray, MD